

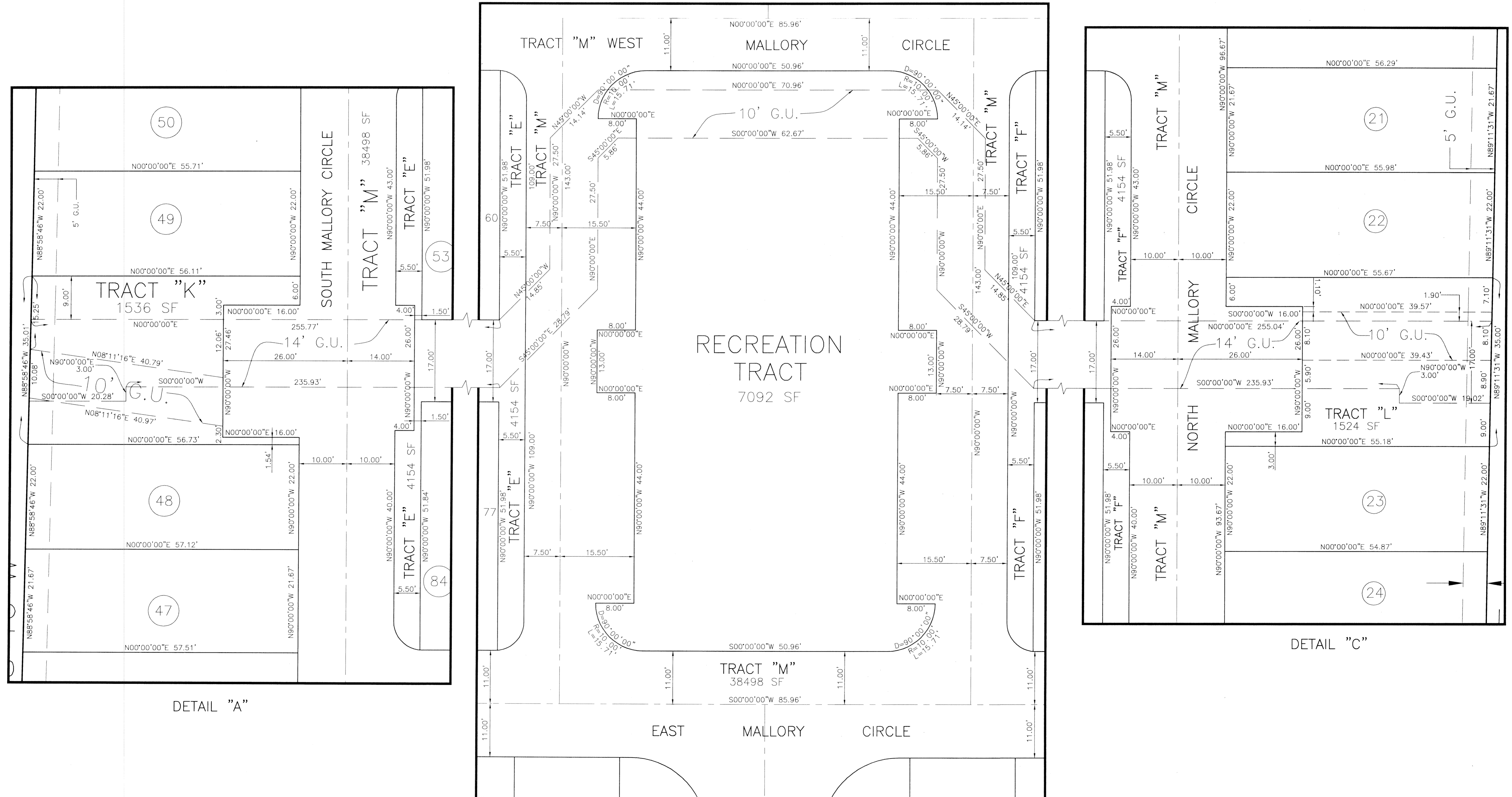
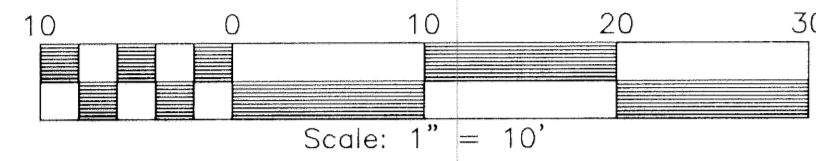
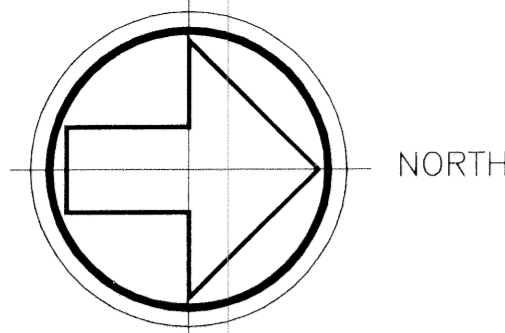
THIS INSTRUMENT PREPARED BY:  
MICHAEL D. ROSE, P.S.M.

**SDA** SHAH DROTOS & ASSOCIATES ENGINEERING SURVEYING PLANNING  
CERTIFICATE OF AUTHORIZATION NO. LB6456  
1835 S.Perimeter Road • Suite 190 • Ft. Lauderdale, Fl. 33309  
PH: 954-776-7604 • FAX: 954-776-7608  
NOVEMBER, 2001

# MALLORY SQUARE

A REPLAT OF A PORTION OF LOTS 1 THROUGH 24, BLOCK 112,  
TOGETHER WITH THE ADJACENT VACATED ALLEY  
DELRAY HEIGHTS, A RESUBDIVISION OF BLOCK 112 OF THE  
MAP OF THE TOWN OF LINTON (PLAT BOOK I, PAGE 130, P.B.C.R.)  
IN FRACTIONAL SECTION 16, TOWNSHIP 46 SOUTH, RANGE 43 EAST  
CITY OF DELRAY BEACH, PALM BEACH COUNTY, FLORIDA

STATE OF FLORIDA  
COUNTY OF PALM BEACH  
This Plat was filed for record  
at \_\_\_\_\_ M., this \_\_\_\_\_ day  
of \_\_\_\_\_ 2001, and duly  
recorded in Plat Book No. \_\_\_\_\_  
on Pages \_\_\_\_\_ and \_\_\_\_\_  
DOROTHY H. WILKEN, CLERK  
BY: \_\_\_\_\_ DC



DETAIL "A"

DETAIL "B"

DETAIL "C"

\\cadd\survey\0157100\PLAT\0557\platt.dwg, DETAILS, 02/06/02 02:42:12 PM, mdr